



US DUCT BROCHURE

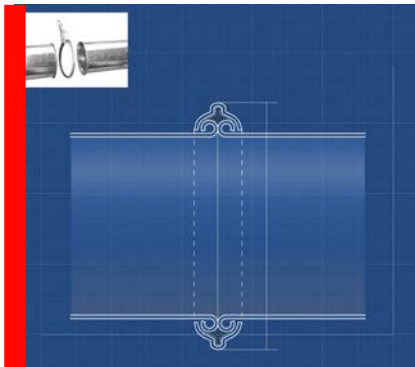
DUCTWORK MADE EASY

4898 MCCRACKEN ROAD
KERNERSVILLE, NC 27284
336-530-1690
info@us-duct.com

DUCT TYPES

US Duct is the only manufacturer offering multiple connection systems. Choose the system that's right for you depending on your application. All components and unique and custom fabrications can be manufactured using the connection type of your choice. Laser special welding is available on all applicable products, gauges, and materials.

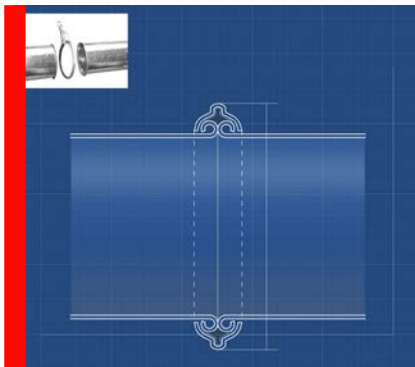
TWO CLAMP-TOGETHER DUCT SYSTEMS



➔ Rolled-Lip (Gasketed Clamp)

US Duct's Rolled-Lip Clamp-Together System utilizes a rolled edge formed on the end of all parts.

- A gasketed, over-center clamp joins the lips
- Clamp-together system reduces installation time by up to 70%
- Fittings' adjustable sleeve and collar allows for infinite field adjustments



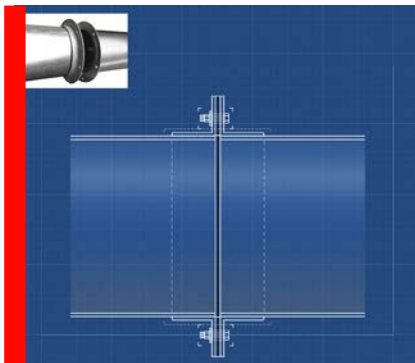
➔ Vanstone Edge (Fully-Gasketed Edge)

US Tubing, our airtight Clamp-Connect System, is:

- A modular, laser-welded, clamp-and-gasket joining system
- Guaranteed leak-free
- Each end has a turned-out lip. A V-shaped gasket fits over one lip at each joint. An adjustable clamp completes the connection and forms an airtight seal
- Adjustable sleeve allows for easy adjustments in the field

TWO FLANGE DUCT OPTIONS

US Duct provides ducts with traditional flanges (angle rings) in black iron galvanized or stainless steel (SS) with holes in sizes 3" and up. These flanges are placed behind turned-out pipe edges or welded to the end of each component. The two flanges at each joint are bolted together, with or without a sealing gasket.



Vanstone: This term refers to a technique where a flange is used to mate 90° lips turned onto the pipe or duct component. In this method, the flange is placed onto the pipe, the lip turned back, and the flange trapped behind it so it can spin freely.

Welded: These flanges are welded to the duct, and the faces of the flanges are the mating surface. Gaskets are often added between the flanges to create an even tighter seal.

ROLLED LIP

LASER-WELDED CLAMP-TOGETHER DUCT—UP TO 70% FASTER!

At US Duct, Clamp-Together is available in

- Diameter sizes 3"-24
- Galvanized and stainless steel
- Standard and heavy (up to 10) gauge.

In addition to laser welded 5' pipe sections, we provide all necessary components and special fittings. The system is designed to be infinitely adjustable. While the Clamp-Together Duct is often the fastest, easiest, and cheapest way to address many dust collection applications, it is usually best used with other connection methods as dictated by application or duct size.



Our extensive knowledge will enable you to get the best solution—for the application and budget using the duct that best fits your need—all from one place!

Learn more at us-duct.com/clamptogether.



VANSTONE EDGE

US TUBING: OUR AIRTIGHT, LEAK-FREE CLAMP-CONNECTION PRODUCT IS THE ULTIMATE SEAL®!

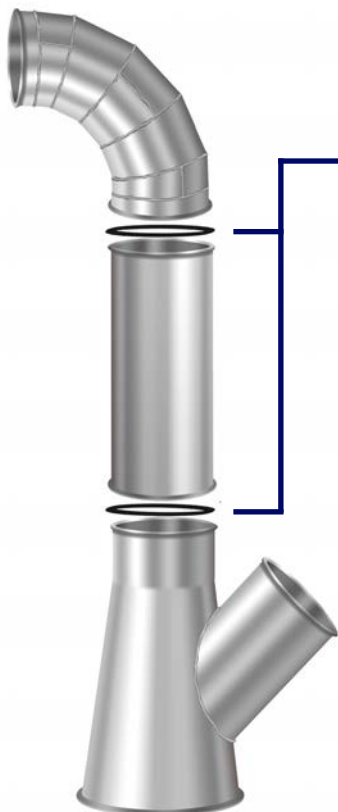
US Tubing, our airtight Clamp-Connect system, is a modular, laser-welded, clamp-and-gasket joining system guaranteed leak-free.

Each component ends with a turned-out. A V-shaped gasket goes over each joint, and the an adjustable clamp completes the connection. When the clamp is tightened, it compresses the gasket between the pipe edges to form an airtight seal.

The components are standard 22-18 gauge metal with a range of up to 16 gauge available. The pipe comes in standard 59" lengths and can be clamped together to produce long runs. An adjustable sleeve pipe allows for **infinite adjustments** in the field.



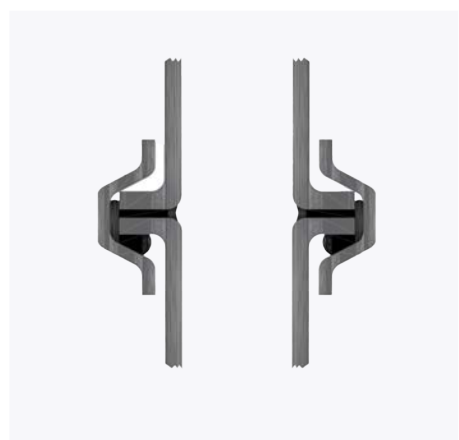
The convenience of clamp-together duct AND the tight seal of flange. Visit us-duct.com/tubing and let Myles show you how US Tubing is the best of both worlds!



V-Gasket & High Strength Clamp



Sliced View: Clamp compressing gasket on Vanstone ends



FLANGE DUCT

YES, we carry flanged duct! We provides ducts with flanges (angle rings) in black iron, galvanized or stainless steel, and with holes. The ducts that have these flanges are available in sizes 3" and up and in black iron, galvanized, or SS. Construction methods range from laser-welded pipe and mechanically locked elbows (in lighter gauges) to MIG welded pipe and components in heavy gauge (even up to 1/4"), all depending upon the application. Flanges can be loose (Vanstoned) or welded to the pipe/components.

➔ Vanstone Edge

Vanstoning uses a flange to mate 90-degree lips turned onto the pipe or duct component. In this method, the flange is placed onto the pipe, the lip is turned back, and the flange can be spun to mate to the next pipe.



➔ Welded

In this technique, flanges are welded to the duct and the faces of the flanges are the mating surfaces. This is different from a Vanstone edge, where the duct lips are mating.

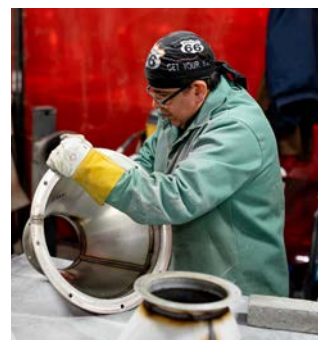
The flanges can be fully welded (meaning that there is a continuous weld) or intermittently welded (meaning that there is a weld at intervals around the duct).

CUSTOM FABRICATIONS



FROM THE HEAVIEST TO THE SMALLEST PRODUCTS

We can fabricate virtually any sheet metal product you need, from your designs or ours. We can produce the custom fabrication from light gauges up to 1/4" steel, a tiny hood, or a truckload of armor-rated plate boxes.



SPECIAL-SOLUTION PRODUCTS

COMPONENTS AND ACCESSORIES TO MEET YOUR SPECIAL APPLICATION REQUIREMENTS.

These unique solutions solve common ductwork challenges, including special hood designs, automatic gates and diverter valves, oil/effluent system fittings, exhaust stacks, valves, and our patented Spark Trap (see page 9 for Spark Trap).

Oil Mist Accumulators



Silencers



Viewing Spools



No Loss Stacks



Automatic Diverters



Automatic Gates



Butterfly Valves



Hangers



Manifolds



Flex Hose



You don't even have to learn. No time for drawings, too busy selling? Our engineers will do it for you.

Hey! Don't see what you're looking for? Visit us-duct.com/custom

LASER WELDING

**THE QUALITY OF THE JOB IS ONLY AS GOOD AS
THE QUALITY OF THE PRODUCT**

When it comes to welding, nothing is more precise or pristine than laser welding. US Duct now offers laser welding for all of our clamp connection pipes. The laser weld offers you a variety of benefits:

➔ Precision work

The clean weld avoids the added bulk of a lock-seam or TIG/MIG welding and thus allows for easier cutting of the pipe for adjusting length while creating an easier fit for the adjustable sleeve.

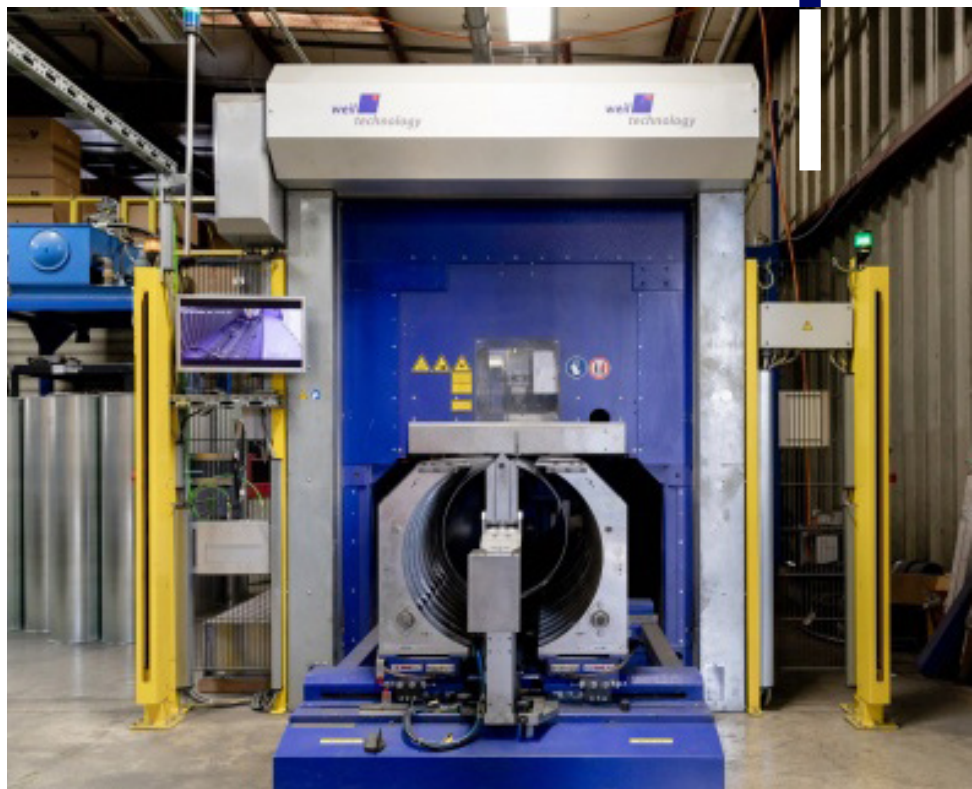


➔ Weld strength

The welded area is stronger than the steel itself. The laser weld is narrow with an excellent depth-to-width ratio and higher strength.

➔ Uniformity

Parts have minimal deformity or shrink.



DUCTQUOTE.COM

DESIGN, ESTIMATE, AND QUOTE IN ONE EASY STEP

Introducing DuctQuote by US Duct, a web-based program for designing and estimating industrial ducting systems. This proprietary software dramatically reduces system design and installation time.

➔ Key Features

- Design dust, mist, and fume collection systems at 20 machine connections per hour.
- Accessible from any browser with a unique user ID and password.

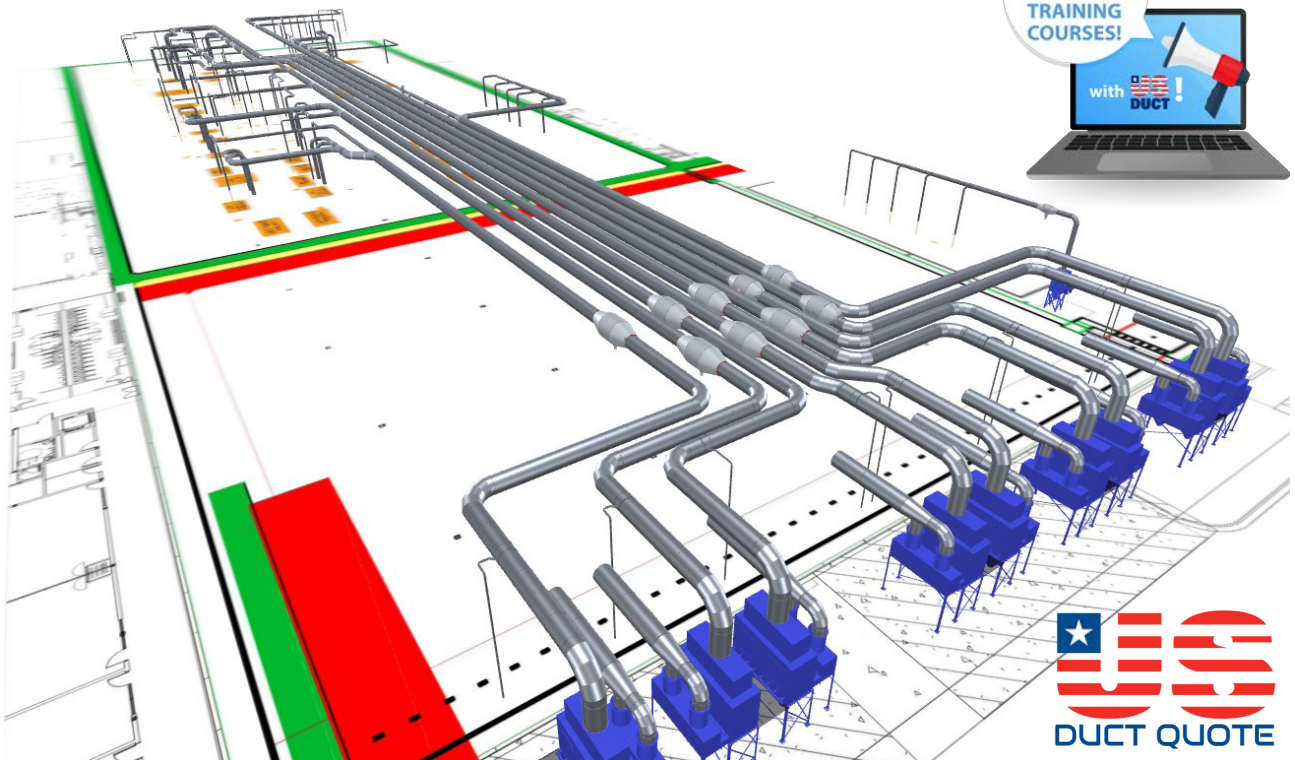
➔ Functionality

- Draws duct paths and inputs desired velocity and CFM.
- Automatically sizes duct, generates a parts list, calculates pressure loss, and provides pricing.
- Produces realistic, interactive 3D drawings to help close jobs.

➔ Benefits

- Saves time and money during installation with detailed 3D drawings and parts lists.
- All projects are stored online for easy access and future edits.

With so many benefits available, including free training courses, DuctQuote is a simple way to enhance your duct experience. Ask your Duct Guy about DuctQuote today.



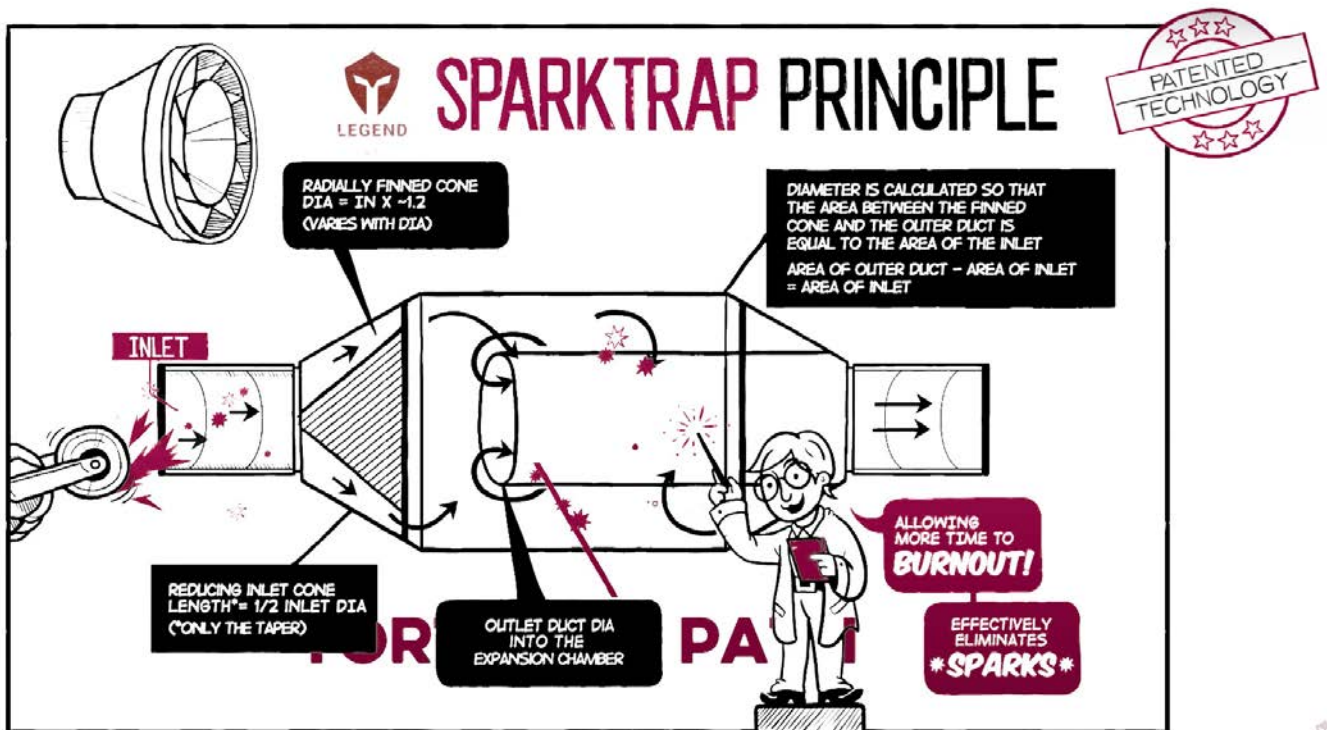
No time to learn the program? Too busy selling? No worries—we'll do the work for you.

SPARK TRAPS

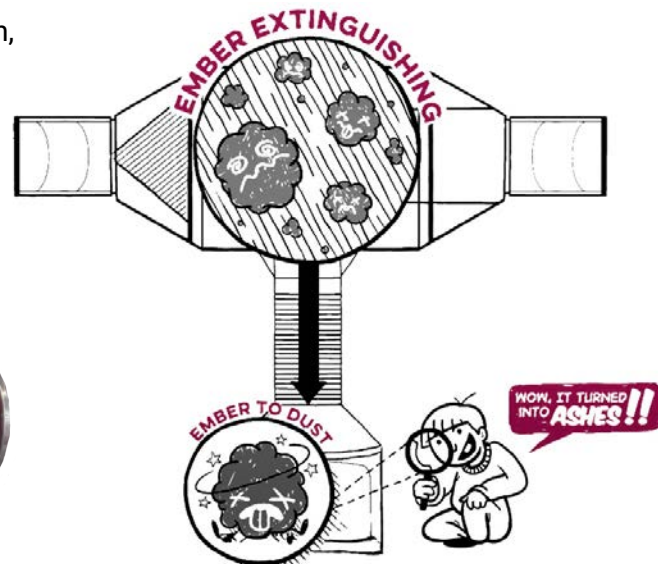
ALL SPARK TRAPS AREN'T CREATED EQUAL!
PATENT NUMBER 10,119,443

www.us-duct.com/legend

Looking inside, the problem with most spark traps is that they only swirl the air. That isn't a problem with US Duct's spark trap. Its patented technology "tumbles" the ember through a "Tortuous Path," forcing contact with more oxygen and allowing more time for the spark to burn out.



Because of the custom cone and the outlet inset design, our spark trap effectively eliminates sparks before they can exit the trap. It can be installed right at the dust collector, adding convenience and eliminating distance requirements! While many spark traps may look the same on the outside, what's on the inside counts. Know the difference and get the genuine Spark Trap from US Duct!



US DUCT'S MISSION

**WE MAKE SELLING INDUSTRIAL DUCTWORK EASY!
IT IS AS EASY AS 1-2-3...4**

01.

➔ Contact us

Contact US Duct, and we'll answer the phone (no voicemail jail). Talk to a seasoned duct professional. Get expert help and more duct options than anyone else can offer. Have a drawing and need a take-off? Need a drawing and specifications? We'll handle it. Depending on the project scope, we can even provide you with an online 3D drawing to share with your customer!

02.

➔ Get the sale

We provide you with detailed quotes, FAST! We'll even help you present it to your customer and provide you with all the literature and support materials needed to make the sale.

03.

➔ Get duct

Approve the quote and tell us when you need it shipped. We ship based on your schedule rather than ours. Benefit from our 7-step quality checks. Get complete packing lists, shipping updates, and installation sheets.

04.

➔ Get paid

We ship your duct with everything your customer needs to get it done so you get paid: Installation instructions, drawings, and support phone numbers. There is no ugly ducting, just quality duct. We'll commission or bill you for the resale (Pay based on predetermined terms).

**ALL WHILE OFFERING YOU THE BEST IN
QUALITY | SERVICE | DELIVERY | PRICE | DESIGN**

4898 McCracken Road, Kernersville, NC 27284 | 336-530-1690 | info@us-duct.com

